

S-Pellets

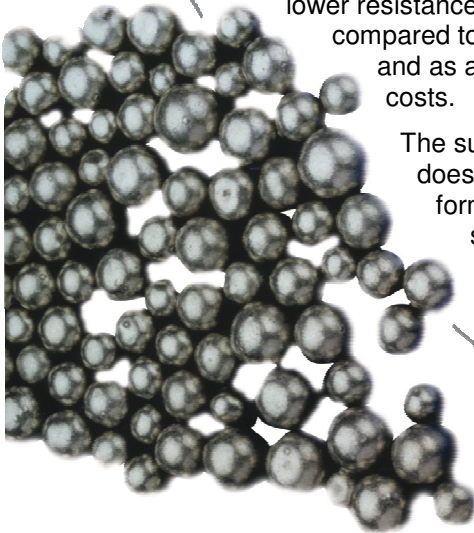
Ni



Vale Inco nickel S-Pellets are fully-activated nickel anode material ideally suited for electroplating with anode baskets. The pellets are spherical in shape and are made by a special gas refining process that retains a small, closely controlled amount of sulphur in the nickel to maximize its electrochemical activity.

Being fully active, Vale Inco S-Pellets dissolve smoothly at 100% efficiency in all nickel plating solutions including those without chloride ions. Due to its activity, it has a lower resistance to current flow compared to sulphur-free nickel and as a result, reduces power costs.

The sulphur in the product does not enter solution but forms insoluble nickel sulfide that is retained in the anode bag where it acts to remove unwanted copper impurities



from the plating solution.

The unique spherical shape of Vale Inco S-Pellets ensures a degree of flow ability unmatched by any other form of plating nickel, and this property makes it relatively easy to fill anode baskets of various sizes and shapes manually or with the aid of hoppers, funnels, channels and tubes. Fully automatic loading devices have been successfully employed with this anode material.

The relatively high packing density coupled with its exceptional flow ability and activity makes this product attractive for all types of plating, especially for high-speed engineering and electroforming applications.

Quality Management Systems and Environmental Management Systems, for the production, packaging and marketing of In S-Nickel Pellets have been registered and comply with the requirements of ISO Standard 9001:2000 and ISO 14001:2004 respectively.

For further information please visit our website (www.valeinco.com) or contact a regional sales representative.

© Vale Inco Limited February 2010

Typical

Form

- Spherical pieces of nickel 6 to 14 mm (0.25 to 0.6 in.) diameter.

Packing Density

- About 5.4 to 6 kg/dm (0.20 to 0.22 lb/in.) of basket capacity.

Packaging

- 10 kg (22 lb) plastic bags; 5 bags per box; 20 boxes per pallet; stretch-wrapped. Net weight 1000 kg (2204 lb).
- 1000 kg (2204 lb) steel drum; one drum per pallet; strapped. Net weight 1000 kg (2204 lb).
- Also available in 1000 kg (2204 lb)/2000 kg (4408 lb) bags.

Typical Chemical Analysis (percent)

Nickel >99.96	Sulfur 0.026
Cobalt <0.00005	Copper 0.0001
Iron 0.0006	Zinc <0.00005
Carbon 0.0005	Lead <0.0002

Exceeds the chemical requirements of ISO 6283, NR9995; BS 375, R 99.95 and ASTM B 39, except for the sulphur content. Nickel by difference.